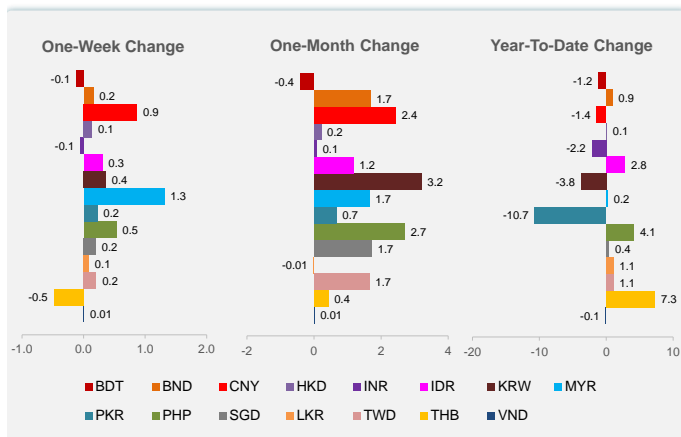
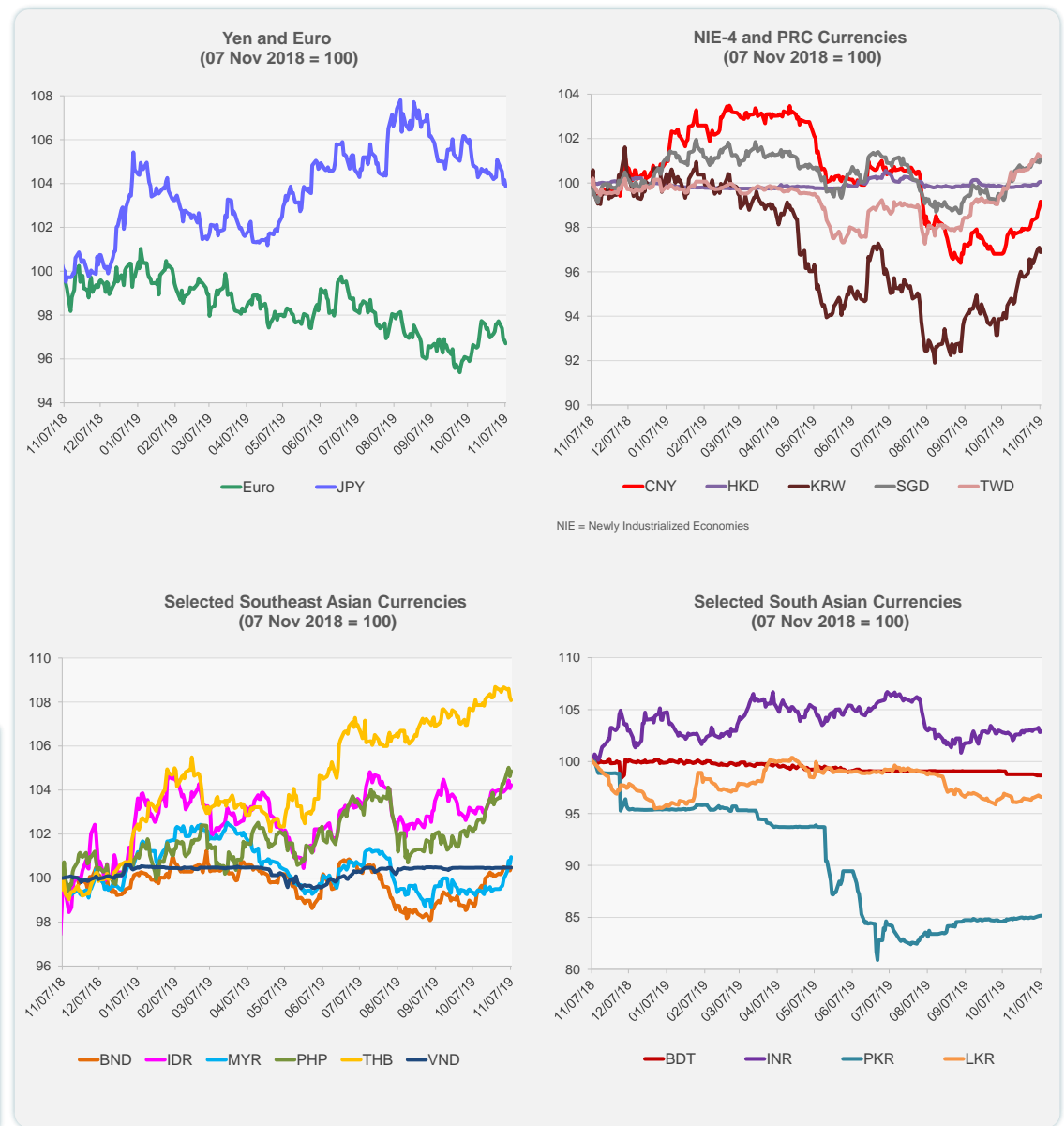


	Latest Closing	% change from Previous Day	% change from 01-Jan-19
Euro	0.90	-0.14	-3.62
Japanese yen (JPY)	109.28	-0.27	0.42
Bangladeshi taka (BDT)	84.88	0.00	-1.18
Brunei dollar (BND)	1.36	0.13	0.92
Chinese yuan (CNY)	6.98	0.28	-1.43
Hong Kong dollar (HKD)	7.83	0.01	0.07
Indian rupee (INR)	70.97	0.04	-2.16
Indonesian rupiah (IDR)	13,998.00	0.14	2.80
Korean won (KRW)	1,159.45	-0.22	-3.76
Malaysian ringgit (MYR)	4.12	0.33	0.23
Pakistan rupee (PKR)	155.55	0.03	-10.73
Philippine peso (PHP)	50.50	0.23	4.13
Singapore dollar (SGD)	1.36	0.13	0.41
Sri Lanka rupee (LKR)	180.92	-0.07	1.07
Taipei,China NT dollar (TWD)	30.39	0.02	1.06
Thai baht (THB)	30.34	-0.12	7.30
Vietnamese dong (VND)	23,200.00	0.00	-0.11

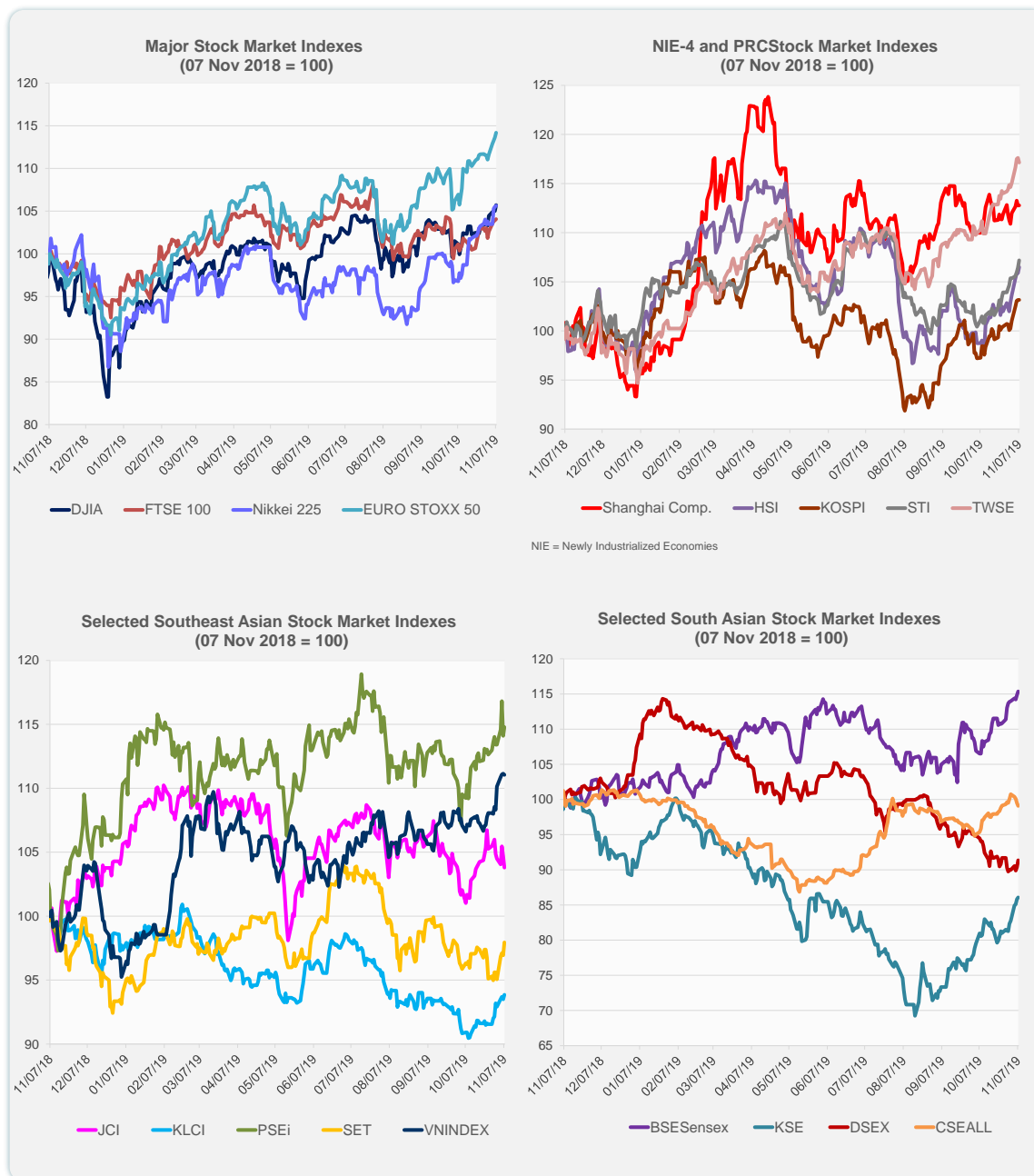
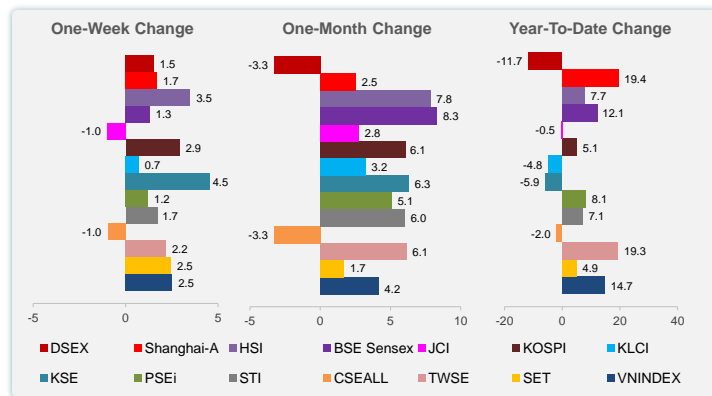


Note: Negative/Decreasing values indicate depreciation of local currency, and positive/increasing values indicate appreciation.  
Source: Bloomberg.

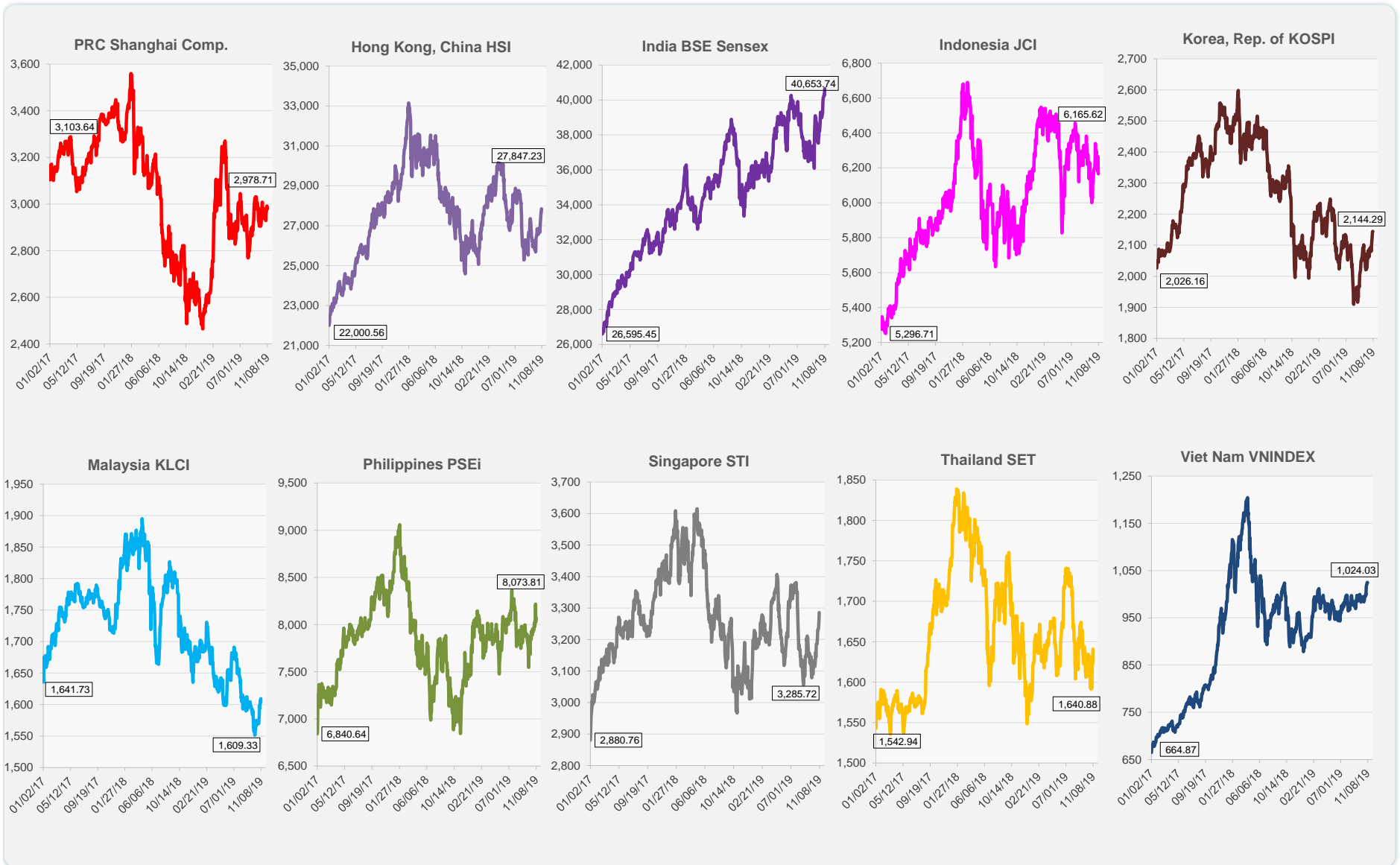


Source: Bloomberg.

	Latest Closing	% change from Previous Day	% change from 01-Jan-19
US Dow Jones Ind Avg	27,674.80	0.66	18.64
US NASDAQ	8,434.52	0.28	27.12
US S&P 500	3,085.18	0.27	23.07
UK FTSE 100	7,406.41	0.13	10.08
EURO STOXX 50	3,706.68	0.49	23.50
Japan NIKKEI 225	23,330.32	0.11	16.57
Bangladesh DSEX	4,754.70	1.08	-11.72
PRC Shanghai Comp.	2,978.71	0.00	19.44
Hong Kong, China HSI	27,847.23	0.57	7.74
India BSE Sensex	40,653.74	0.45	12.13
Indonesia JCI	6,165.62	-0.84	-0.47
Korea, Rep. of KOSPI	2,144.29	0.01	5.06
Malaysia KLCI	1,609.33	0.38	-4.81
Pakistan KSE 100	35,758.52	0.30	-5.89
Philippines PSEi	8,073.81	0.60	8.14
Singapore STI	3,285.72	0.71	7.07
Sri Lanka CSEALL	5,932.07	-0.41	-1.99
Taipei, China TWSE	11,606.56	-0.40	19.32
Thailand SET	1,640.88	1.04	4.92
Viet Nam VNINDEX	1,024.03	-0.09	14.73



Source: Bloomberg.

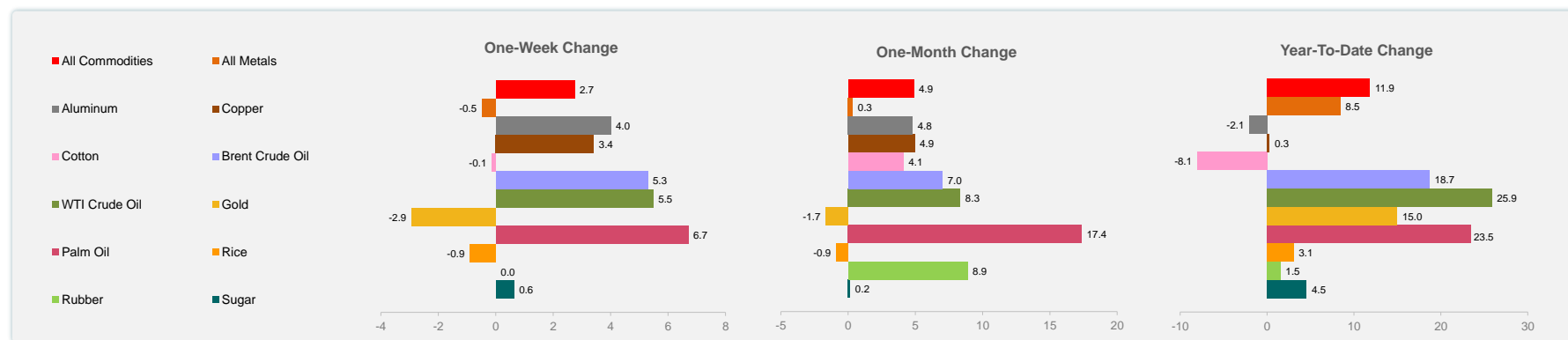
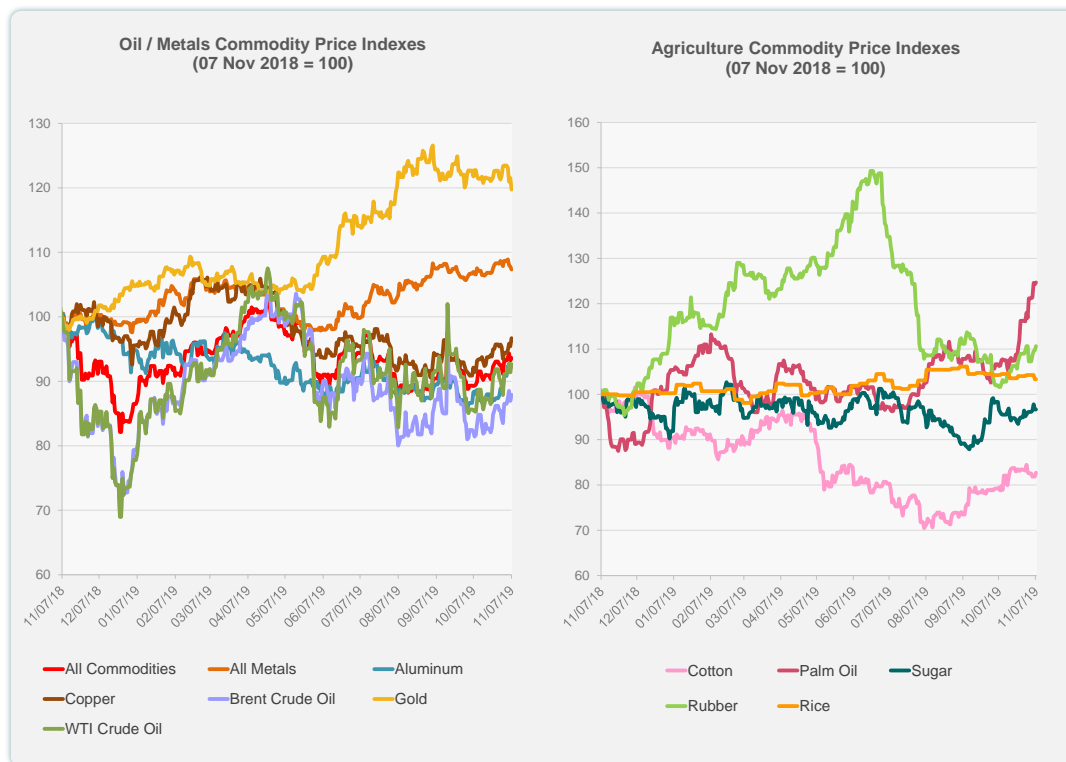


Source: Bloomberg.

	Unit	Latest Closing	% change from Previous Day	% change from 01-Jan-19
S&P All Commodities	US\$	418.70	0.42	11.85
S&P All Metals	US\$	221.50	-0.41	8.45
Aluminum	US\$/metric ton	1,824.25	0.44	-2.07
Copper	US\$/metric ton	5,966.50	1.32	0.29
Cotton	US cents/lb	63.85	1.04	-8.06
Brent Crude Oil	US\$/barrel	62.70	1.11	18.71
WTI Crude Oil	US\$/barrel	57.15	1.42	25.85
Gold	US\$/troy oz	1,468.50	-1.48	14.99
Palm Oil	US\$/metric tonne	583.41	0.35	23.51
Rice <sup>1</sup>	US\$/metric ton	437.00	0.00	3.07
Rubber <sup>2</sup>	US\$/kg	150.80	0.87	1.55
Sugar	US cents/lb	12.67	0.00	4.54

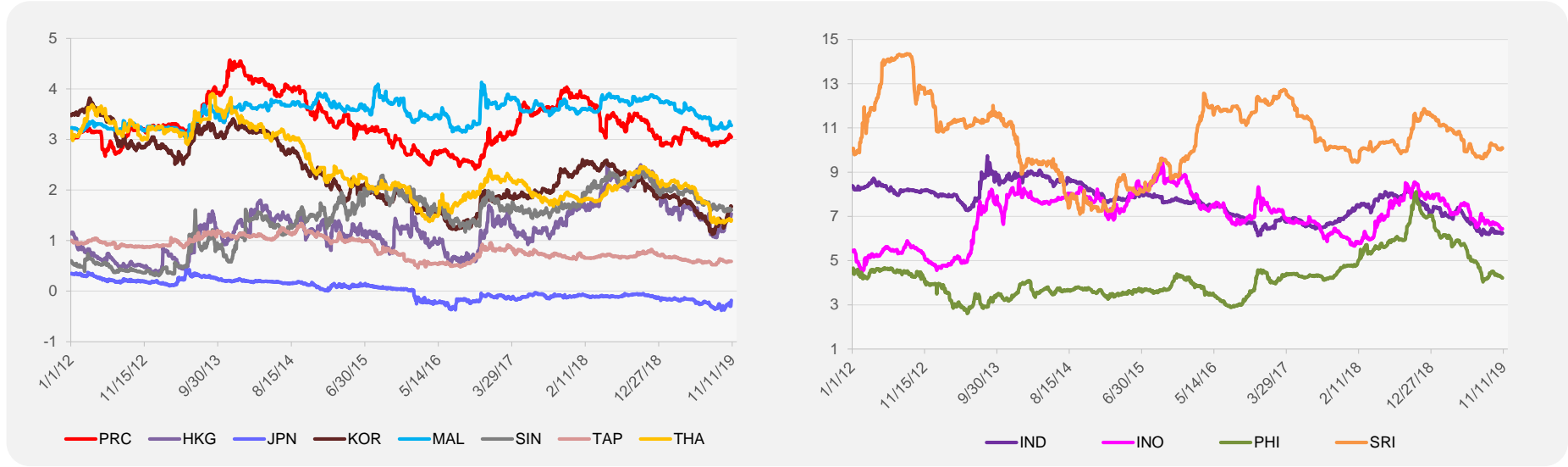
<sup>1</sup> Latest closing price from 6 November 2019.

<sup>2</sup> Singapore Exchange, Ribbed Smoked Sheet Rubber.

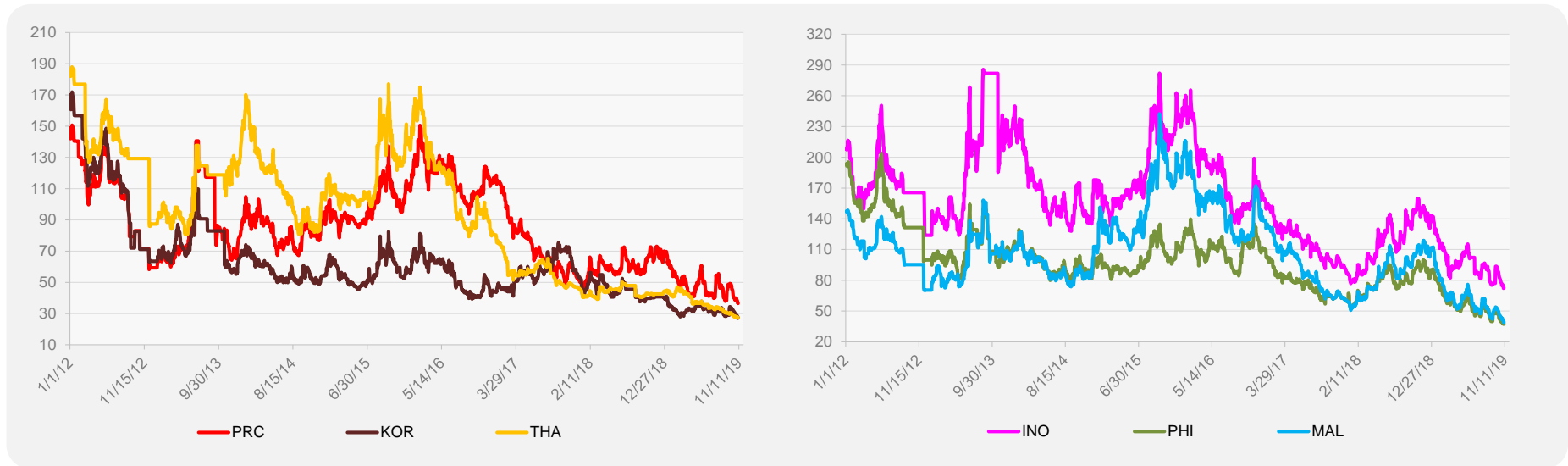


Source: Bloomberg.

### 5-YEAR LOCAL CURRENCY GOVERNMENT BOND YIELDS (%)



### 5-YEAR CREDIT DEFAULT SWAP<sup>1</sup>



<sup>1</sup> In USD and based on sovereign bonds.  
Source: Bloomberg.